



Parks and Trails sheet

General information

Name of the Park/Trail	BIOGENETIC NATURE RESERVE DUNA FENIGLIA AND ORBETELLO LAGOON
Address	Provincial road of Porto Ercole
City	Orbetello (GR)

TESTED BY: [Handy Superabile Social Promotion Association](#) in 2024

Please note The following information refers to the date of verification shown at the bottom of each sheet. **The Association** is not responsible for any significant changes made by the property after the visit.

Summary

Parks and Trails sheet	1
General information	1
Description	2
How to reach the Park	3
Car park	4
Pathway from the car park to the entrance	5
Description of the Park and the internal pathways.....	6
Bar/restaurant	17
Toilets	17
Medical practices/healthcare facilities.....	17

Project carried out with the contribution of the





Description

The "Duna Feniglia" Forest Protection Reserve occupies a strip of flat territory between the Orbetello lagoon to the north and the Tyrrhenian Sea to the south, which connects the Argentario promontory, near Porto Ercole, with the hill of Ansedonia. The protected area occupies the southern tombolo of the Orbetello lagoon. In 1971 the Feniglia Dune was declared a Forest Protection Reserve, precisely because of its important protective function and counteract erosion exerted by strong sea winds. The morphology is typical of sandy coast environments, with dune cordon and back-dune environment, in which there are sometimes areas subject to temporary flooding.

The Reserve is today a pine forest of domestic and maritime pine of artificial origin, of the same age on large surfaces, obtained through a long period of time and a succession of complex work phases. Strongly desired for the protection of the lagoon and the local community, the forest was also built for production purposes for timber, pine nuts and resin. Today the woods of the Reserve share the great environmental value attributed to the coastal pine forests of Tuscany, characterizing and identifying elements of the landscape.

Vegetation

From a vegetation point of view, there are three main strips that run along the entire Reserve: the strip overlooking the sea, occupied by vegetation typical of sand dunes, and further inland, by sparse formations with a prevalence of maritime pine, the central strip, more extensive, occupied by the pine forest producing stone pine, and the strip bordering the lagoon, in which the pine is mixed with broad-leaved sclerophyllous and deciduous trees variously interpenetrated with prairies of halophilous species.

Wildlife

The main mammal of the Reserve is the fallow deer. This ungulate, not native, was introduced around 1954 with 8 specimens, two males and six females, with the aim of containing the spread of the invasive locust tree in reforestation. The fallow deer population, estimated at about 200 specimens, very variable given the limited extension of the Reserve and the continuity with other soils, has undergone a contraction with the consolidation of the presence of the wolf starting from 2017. Another representative of the ungulates is the wild boar rather variable in the numerical consistency of the population. The damage produced together with the fallow deer is considerable, and forces plantations





of native species only within fenced areas or through the use of individual protections. In the pine forest there are some rare bird species of fundamental importance for the maintenance of the lagoon ecosystem.

To allow as many users as possible to enjoy the beauty of the reserve, the NATURE TRAIL has been created to meet the needs of the blind. Of course, the path is also accessible to people in wheelchairs, but in some places, given the sandy bottom and steep slopes, a companion is recommended.

How to reach the Park

By car	<p>coming from the north, from Florence or Pisa, you have to head first towards Grosseto and then continue along the SS Aurelia towards Orbetello. From Orbetello follow the signs for Porto Ercole and as soon as you cross the Orbetello dam and take the road to Porto Ercole turn immediately left.</p> <p>Coming from the south, take the A12 towards Civitavecchia and then the SS Aurelia to Orbetello. From Orbetello follow the signs for Porto Ercole and as soon as you cross the Orbetello dam and take the road to Porto Ercole turn immediately left.</p>
By plane	Rome Fiumicino Airport 133 km away
Assistance service for people with disabilities	YES
Embarkation/disembarkation of passengers with reduced mobility	with courtesy chair and ambulift/finger
Tactile paths for the blind and visually impaired	YES

Project carried out with the contribution of the





There is a toilet room accessible with grab handles	YES
Eventual notes	From Fiumicino Airport, connect to Roma Termini station with Leonardo Express, a non-stop service operating every 15 minutes. Dedicated seats and toilets equipped for people with reduced mobility are provided on all trains. The guide dog travels free of charge.
By train	The line to take is the Rome-Civitavecchia-Grosseto-Pisa getting off at Orbetello-Monte Argentario station.
Nearest station	Orbetello – Mone Argentario 6 km away
Assistance service for people with disabilities	YES
Eventual notes	continue by public transport. Consult timetables on the website of the Tuscan bus lines https://www.at-bus.it/it

Car park

Public parking nearby	YES, along the pine forest
Private parking nearby	YES
Type of public parking floor	Stabilized lawn
Presence of parking space reserved for people with disabilities	NO





Pathway from the car park to the entrance

Route from the car park to the starting point	flat
Distance from parking to entrance	5 meters
Type of trail surface	asphalt
There are indicators and tactile maps	NO





Description of the Park and the internal pathways

Length	About 650 meters
In the internal paths and paths there are maps and tactile signs for the blind	YES with tactile routes and maps
Route description	The route starts from the initial square which is located immediately after the access from the main gate.
	In the square there are many information panels on the flora and fauna of the area and a map on the left side that illustrates the entire area of the reserve and in particular the nature trail for the blind
	
	Continuing forward on the right we find a tactile map with information in Braille showing the geomorphology of the Orbetello Lagoon, the dense pine forest and the sandy dune present within the Feniglia Dune Reserve.





At the entrance, immediately on the left, the nature trail for the blind begins, which is located right in front of the tactile maps highlighted above. The route features a rubber loges system consisting of surfaces with specially raised reliefs created to be felt under the feet.



The tinerary continues flat on a wooden walkway with handrails on both sides. On the left a map in Braille to present the path. After about 10 meters, the walkway ends and a path begins on beaten ground until you reach a hut that represents a bird watching point.





	<p>The shed has 2 ramps. The first is 81 cm long, 110 cm wide with a slope of 13%, the second is 97 cm long, 112 cm wide, with a slope ranging from 5.50 to 9.5%. Both ramps have a threshold of 4 cm at the beginning.</p>
	<p>Inside the shed we find a 48 cm high bench and information panels.</p>
	<p>The 2 windows that allow sighting have a height of 120 cm and 155 cm.</p>





Continuing we find on the left 4 tactile maps with information in Braille. The first 2 when locked have a height from the ground of about 92 cm, the third and fourth have a height of about 94 cm. The open touch maps have a height of 82/84 cm.



The maps present the fauna of the lagoon.



From the tactile maps, continue ahead by turning right





	<p>You walk along the stable dirt path, free of major obstacles until you reach the next map.</p>
	
	<p>The maps illustrate the naturalistic information of the lagoon through Braille language and the conformation of the territory through the tactile map.</p>
	<p>Continue straight until you find a wooden walkway with handrails on both sides</p>





At the end of the path that takes us back to the main road we find another map in Braille that presents us with the continuation of the itinerary on the other side of the pine forest. From here, turn right until you come to the signs for the continuation of the route.



The following map shows the continuation of the route to the other side of the pine forest. The second part of the path winds along the pine forest and on the ground you can find small obstacles such as branches and fallen pine cones. The path is outlined by a wooden handrail on the right side





The relief maps show the characteristics of the pine forest and the animal tracks. The explanatory panels in Braille provide relevant scientific information about the entire route.





Through the maps, the visitor understands which are the typical trees and shrubs (rosemary, mastic, pine, etc.) and the type of fauna present in the area (mammals, reptiles, amphibians, birds)

Towards the middle of the route, a Braille map tells us that the fence has been interrupted and that we continue for a short distance without a handrail. After about 8 meters, always on the right side, we find a tactile and Braille panel with the display of mushrooms.





	<p>The last stretch of the route has a tactile and Braille panel with information relating to the waste that is often left in the pine forest by visitors, highlighting the damage to the entire habitat.</p>
	<p>The route ends in front of the exit walkway of the first section located towards the lagoon. Turn left and head towards the exit of the reserve.</p>



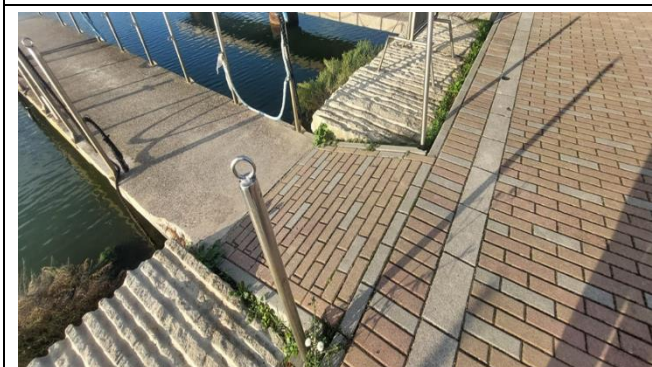


<p>Eventual notes</p>	<p>After visiting the Feniglia Dune, the Orbetello Lagoon is also worth a visit, about 2 km away from the Reserve. The closest parking lots to the most accessible point of the lagoon are located in Piazza della Repubblica and along Via Mura di Ponente. 1 stalemate in P.za Republic 5 stalls in Via Mura Ponente</p>
	
<p>From the parking lot in P.za della Repubblica continue at foot towards the Lagoon, crossing the pedestrian crossing</p>	
	<p>Once we have crossed the strips we find ourselves in front of a gap with a width of more than 90 cm, we turn right and find two ramps.</p>





The first ramp has a length of 510 cm, width 150 cm slope 7%, the second ramp length 300 cm, width 150 cm slope 7%



The three platforms have a ramp 116 cm long, 150 cm wide, and a slope of 24%



The Orbetello Lagoon has an extension of 27 km². The part of the Western Lagoon (pictured) is protected by the WWF oasis and is a wetland of international importance according to the Ramsar convention. Many species of birds nest and pass through here.





Bar/restaurant

Eventual notes	At the entrance to the itinerary of the Duna Feniglia Reserve, where there are also parking lots, there is a bar open only in the summer and toilets. At the time of the inspection, it was not possible to verify the type of room and the toilet room.
----------------	--

Toilets

Eventual notes	Present but not verified due to summer closure
----------------	--

Medical practices/healthcare facilities

Hospitals near the property	San Giovanni di Dio Hospital Lungo Lago dei Pescatori, Tel +39 869111
Other healthcare facilities	Italian Red Cross, Orbetello local committee. Via Nizza 2, Tel +39 0564 642807 Via Gioberti 18 Tel +9 0564 833052 Guardia Medica service of continuity of care, Via Donatori del Sangue, Tel +39 0564 450053

TESTED BY: [Handy Superabile Social Promotion Association](#) in 2024

